

**Attachment FBW-1**  
**PSNH Resource Portfolio - 2015**

<u>Resource</u>	<u>Rating - MW</u>		<u>Interest</u>	<u>Capability - MW</u>	
	<u>Winter</u>	<u>Summer</u>		<u>Winter</u>	<u>Summer</u>
Amoskeag	17.5	16.8	100%	17.5	16.8
Ayers Island	9.1	8.5	100%	9.1	8.5
Canaan	0.9	1.0	100%	0.9	1.0
Eastman Falls	6.5	5.6	100%	6.5	5.6
Garvins/Hooksett	6.1	2.5	100%	6.1	2.5
Gorham	1.4	0.9	100%	1.4	0.9
Jackman	3.5	3.6	100%	3.5	3.6
Smith	11.1	9.6	100%	11.1	9.6
Merrimack 1	108.1	108.0	100%	108.1	108.0
Merrimack 2	330.5	328.1	100%	330.5	328.1
Schiller 4	48.0	47.5	100%	48.0	47.5
Schiller 5	42.6	43.1	100%	42.6	43.1
Schiller 6	47.9	47.2	100%	47.9	47.2
Newington	400.2	400.2	100%	400.2	400.2
Lost Nation	18.0	13.8	100%	18.0	13.8
Merrimack CT1	21.7	16.8	100%	21.7	16.8
Merrimack CT2	21.3	16.8	100%	21.3	16.8
Schiller CT 1	18.5	17.6	100%	18.5	17.6
White Lake Jet	22.4	17.4	100%	22.4	17.4
Wyman 4	605.9	602.1	3.14%	19.0	18.9
Lempster Wind	9.1	2.0	90%	8.2	1.8
Burgess Biopower	67.5	67.5	100%	67.5	67.5
IPPs Total	32.3	21.4	100%	32.3	21.4
Bio Energy buyout (Note 1)	10.0	10.0	100%	10.0	10.0
Total				1,272.3	1,224.8

Notes:

1) Bio Energy buyout contract is for energy only, and terminated in June, 2015.

**Attachment FBW-2**  
**PSNH Supply Resources Used to Serve Energy Requirements - 2015**

<b>Peak</b>	Energy Requirement	PSNH Resource	<b><u>Portion of Requirement Served by ...</u></b>											
			<u>Subtotal</u>	<u>IPPs</u>	<u>Buyout Contracts</u>	<u>Burgess Biomass</u>	<u>Hydro</u>	<u>Merrimack</u>	<u>Schiller</u>	<u>Newington</u>	<u>Wyman</u>	<u>Bilateral Purchases</u>	<u>ISO-NE Spot Purchases</u>	<u>Combustion Turbines</u>
<b>2015</b>	<b>MWh</b>													
Jan	244,120	87%	6%	0%	4%	7%	55%	15%	1%	1%	0%	13%	0.01%	
Feb	230,927	96%	5%	1%	6%	5%	58%	16%	5%	0%	0%	4%	0.06%	
Mar	204,362	66%	5%	2%	5%	5%	36%	11%	1%	0%	9%	25%	0.00%	
Apr	163,622	40%	10%	2%	12%	12%	1%	2%	1%	0%	20%	40%	0.00%	
May	147,337	41%	7%	2%	13%	8%	0%	10%	0%	0%	23%	37%	0.00%	
Jun	170,684	35%	7%	1%	7%	10%	1%	9%	0%	0%	22%	44%	0.01%	
Jul	211,431	38%	5%	0%	11%	6%	4%	11%	2%	0%	18%	44%	0.03%	
Aug	190,685	35%	4%	0%	9%	4%	2%	10%	7%	0%	18%	47%	0.09%	
Sep	166,590	37%	5%	0%	11%	2%	9%	10%	0%	0%	32%	32%	0.10%	
Oct	150,520	39%	8%	0%	7%	7%	4%	13%	0%	0%	23%	37%	0.01%	
Nov	145,832	37%	8%	0%	10%	7%	1%	9%	1%	0%	4%	59%	0.11%	
Dec	188,457	44%	7%	0%	12%	9%	6%	9%	0%	0%	8%	48%	0.05%	
Totals	2,214,566	52%	6%	1%	9%	7%	18%	11%	2%	0%	14%	34%	0.04%	

<b>Off-Peak</b>	Energy Requirement	PSNH Resource	<b><u>Portion of Requirement Served by ...</u></b>											
			<u>Subtotal</u>	<u>IPPs</u>	<u>Buyout Contracts</u>	<u>Burgess Biomass</u>	<u>Hydro</u>	<u>Merrimack</u>	<u>Schiller</u>	<u>Newington</u>	<u>Wyman</u>	<u>Bilateral Purchases</u>	<u>ISO-NE Spot Purchases</u>	<u>Combustion Turbines</u>
<b>2015</b>	<b>MWh</b>													
Jan	244,957	90%	7%	1%	5%	8%	59%	10%	0%	0%	0%	10%	0.01%	
Feb	211,859	98%	5%	2%	7%	6%	65%	11%	2%	0%	0%	2%	0.00%	
Mar	193,761	69%	6%	2%	7%	6%	38%	10%	0%	0%	5%	26%	0.00%	
Apr	139,820	50%	12%	3%	16%	15%	1%	3%	0%	0%	5%	45%	0.00%	
May	157,623	49%	9%	2%	17%	10%	0%	11%	0%	0%	2%	49%	0.13%	
Jun	137,552	44%	9%	1%	10%	12%	1%	12%	0%	0%	7%	49%	0.00%	
Jul	160,103	42%	7%	0%	15%	8%	1%	11%	1%	0%	0%	58%	0.00%	
Aug	177,859	31%	5%	0%	12%	4%	0%	8%	1%	0%	0%	69%	0.00%	
Sep	147,470	36%	6%	0%	15%	2%	3%	9%	0%	0%	0%	64%	0.03%	
Oct	137,301	45%	10%	0%	9%	8%	3%	14%	0%	0%	0%	55%	0.04%	
Nov	152,825	44%	10%	0%	12%	9%	2%	9%	1%	0%	0%	56%	0.00%	
Dec	167,173	49%	9%	0%	16%	12%	3%	10%	0%	0%	0%	51%	0.00%	
Totals	2,028,302	57%	8%	1%	11%	8%	19%	10%	0%	0%	1%	42%	0.02%	

Notes:

- 1) Buyout Contracts refers to IPP replacement purchases (Bio Energy).
- 2) PSNH Resource Subtotal is the sum of all columns except Bilateral and Spot Purchases.
- 3) Lempster Wind PPA is included in IPPs.

**Attachment FBW-3**  
**PSNH Bilateral and ISO-NE Spot Purchases and Sales - 2015**

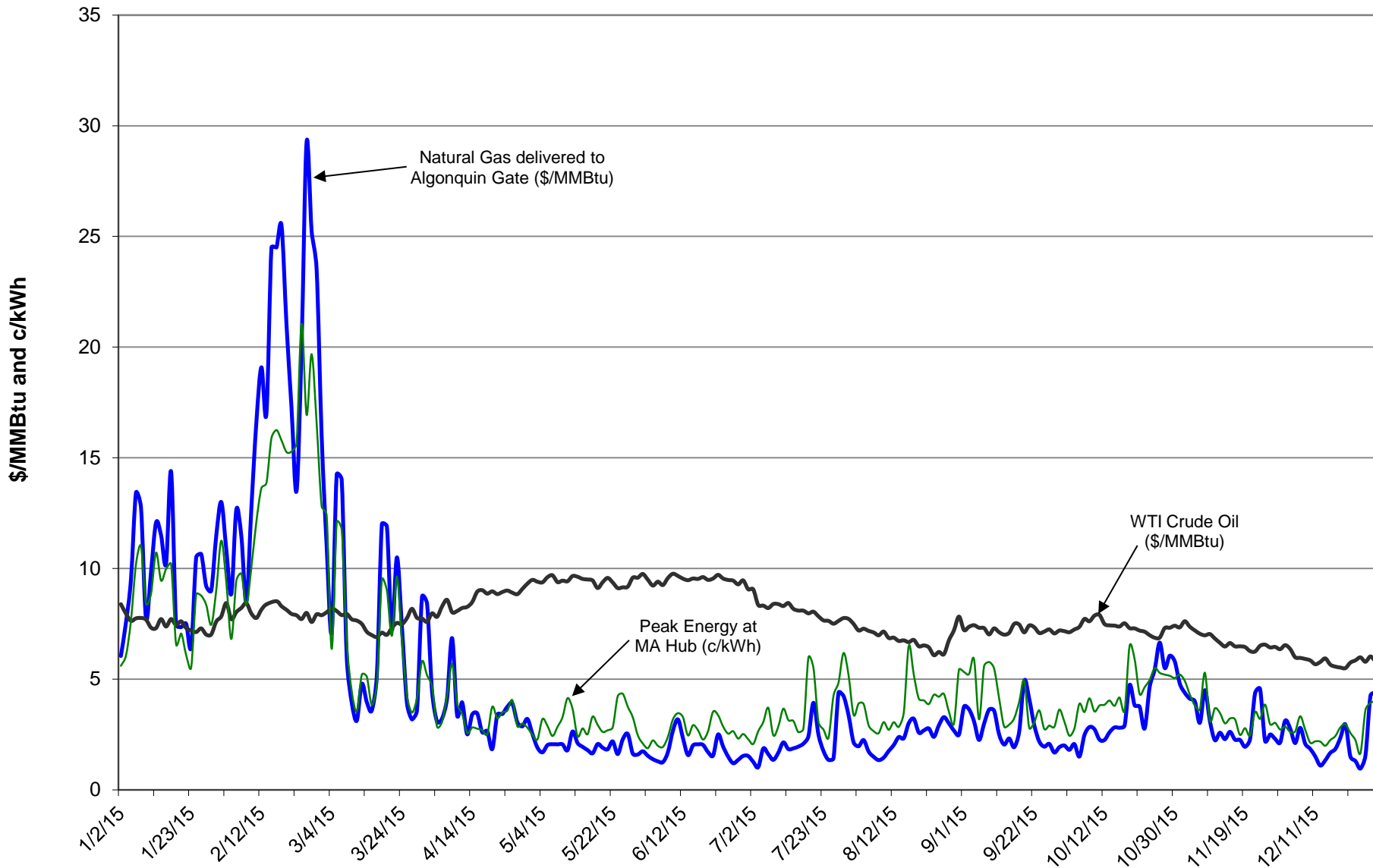
**Peak**

2015	Total Bilateral Purchases MWh	Total Bilateral Purchases \$000	Avg Price \$/MWh	Total ISO-NE Spot Purchases MWh	Total ISO-NE Spot Purchases \$000	Avg Price \$/MWh	Total ISO-NE Spot Sales MWh	Total ISO-NE Spot Sales \$000	Avg Price \$/MWh
Jan	0	0	0.00	31,324	2,798	89.33	2,203	95	43.29
Feb	0	0	0.00	9,986	1,101	110.27	39,971	6,453	161.44
Mar	18,400	839	45.62	52,089	3,439	66.03	5,210	321	61.54
Apr	32,800	1,315	40.10	65,336	2,564	39.25	406	(6)	(15.88)
May	33,600	1,392	41.42	53,813	1,988	36.93	32	(2)	(48.82)
Jun	36,800	1,409	38.30	74,318	2,261	30.42	4	(2)	(460.78)
Jul	38,400	1,469	38.25	92,236	3,380	36.64	704	2	2.85
Aug	33,600	1,236	36.80	90,125	3,420	37.94	172	63	363.96
Sep	54,400	1,793	32.96	52,706	2,111	40.06	2,325	29	12.66
Oct	35,200	1,306	37.10	56,066	2,690	47.97	0	0	0.00
Nov	5,600	221	39.50	86,075	3,177	36.91	435	(34)	(77.89)
Dec	16,000	444	27.73	90,318	2,785	30.84	0	0	0.00
Totals	304,800	11,424	37.48	754,391	31,714	42.04	51,463	6,919	134.45

**Off-Peak**

2015	Total Bilateral Purchases MWh	Total Bilateral Purchases \$000	Avg Price \$/MWh	Total ISO-NE Spot Purchases MWh	Total ISO-NE Spot Purchases \$000	Avg Price \$/MWh	Total ISO-NE Spot Sales MWh	Total ISO-NE Spot Sales \$000	Avg Price \$/MWh
Jan	0	0	0.00	23,531	1,607	68.29	15,688	906	57.75
Feb	0	0	0.00	4,088	458	112.05	67,711	8,007	118.25
Mar	9,600	446	46.50	50,406	2,725	54.06	13,501	1,028	76.13
Apr	6,400	224	35.00	63,515	1,793	28.23	100	2	15.43
May	3,200	98	30.50	77,576	1,867	24.07	0	0	0.00
Jun	9,600	194	20.17	67,180	1,306	19.44	93	1	9.28
Jul	0	0	0.00	92,985	2,238	24.06	0	0	0.00
Aug	0	0	0.00	122,389	3,295	26.92	0	0	0.00
Sep	0	0	0.00	94,711	2,589	27.33	925	81	87.88
Oct	0	0	0.00	75,692	2,709	35.79	0	0	0.00
Nov	0	0	0.00	86,139	2,495	28.97	246	4	14.57
Dec	0	0	0.00	85,214	1,831	21.48	108	(0)	(1.68)
Totals	28,800	962	33.39	843,425	24,913	29.54	98,373	10,028	101.93

**Attachment FBW-4**  
**Daily Prices (Natural Gas, Crude Oil, Day-Ahead Peak Energy) - 2015**



**Attachment FBW-5**  
**Summary of PSNH Capacity Position - 2015**

<u>2015</u>	Total ISO-NE Capacity Requirement <u>MW</u>	PSNH Share of ISO-NE Obligation <u>%</u>	PSNH Share of ISO-NE Obligation <u>MW</u>	PSNH Capacity Expense <u>\$(000)</u>	PSNH Capacity Resources <u>MW</u>	PSNH Capacity Revenues <u>\$(000)</u>	PSNH Net Capacity Expense <u>\$(000)</u>
Jan	33,977	4.07%	1,384	4,219	1,222	3,790	429
Feb	33,977	4.00%	1,360	4,139	1,222	3,783	356
Mar	33,977	3.70%	1,258	3,823	1,223	3,771	51
Apr	33,866	3.45%	1,169	3,552	1,223	3,767	(215)
May	33,866	3.38%	1,146	3,482	1,223	3,769	(286)
Jun	34,430	3.30%	1,135	3,669	1,353	4,355	(686)
Jul	34,424	3.28%	1,128	3,647	1,353	4,356	(709)
Aug	34,420	3.23%	1,112	3,596	1,353	4,355	(759)
Sep	34,419	3.22%	1,107	3,538	1,353	4,303	(765)
Oct	34,622	3.23%	1,117	3,543	1,385	4,355	(812)
Nov	34,621	3.25%	1,127	3,574	1,386	4,326	(752)
Dec	34,704	3.31%	1,149	3,643	1,391	4,328	(685)
Totals	411,304	3.45%	14,192	44,427	15,686	49,259	(4,832)

Note: PSNH Resources include Fossil-Hydro Assets, non-utility IPPs, and Hydro-Quebec Interconnection Credits.